

ZTB 455KHz SPECIFICATION

Frequency Range: 455KHz

Frequency Accuracy: $\pm 2\text{KHz}$

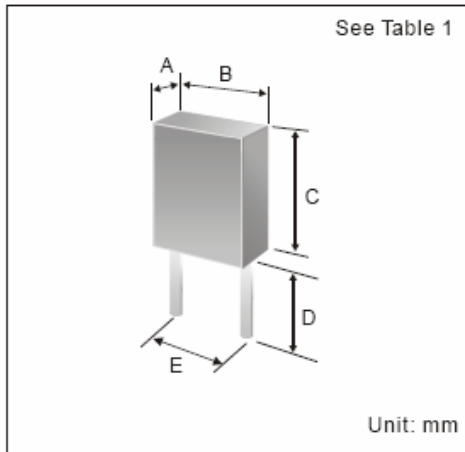
Resonant Impedance: ≤ 20

Temperature Stability: $\pm 0.3\%$

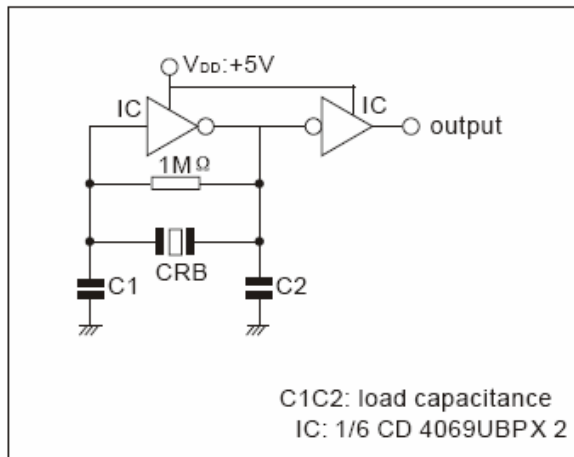
Temperature range: $-20^{\circ}\text{C} \sim 80^{\circ}\text{C}$

Aging for ten years: $\pm 0.3\%$

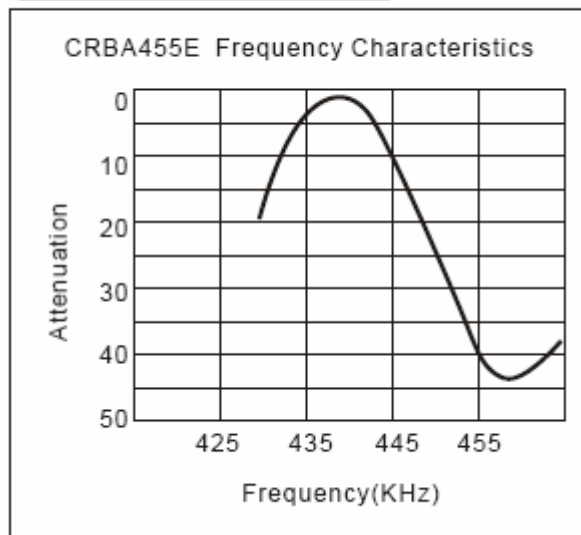
DIMENSIONS



TEST CIRCUIT



CHARACTERISTICS



A	B	C	D	E
3.5	7.0	9.0	5.0	5.0