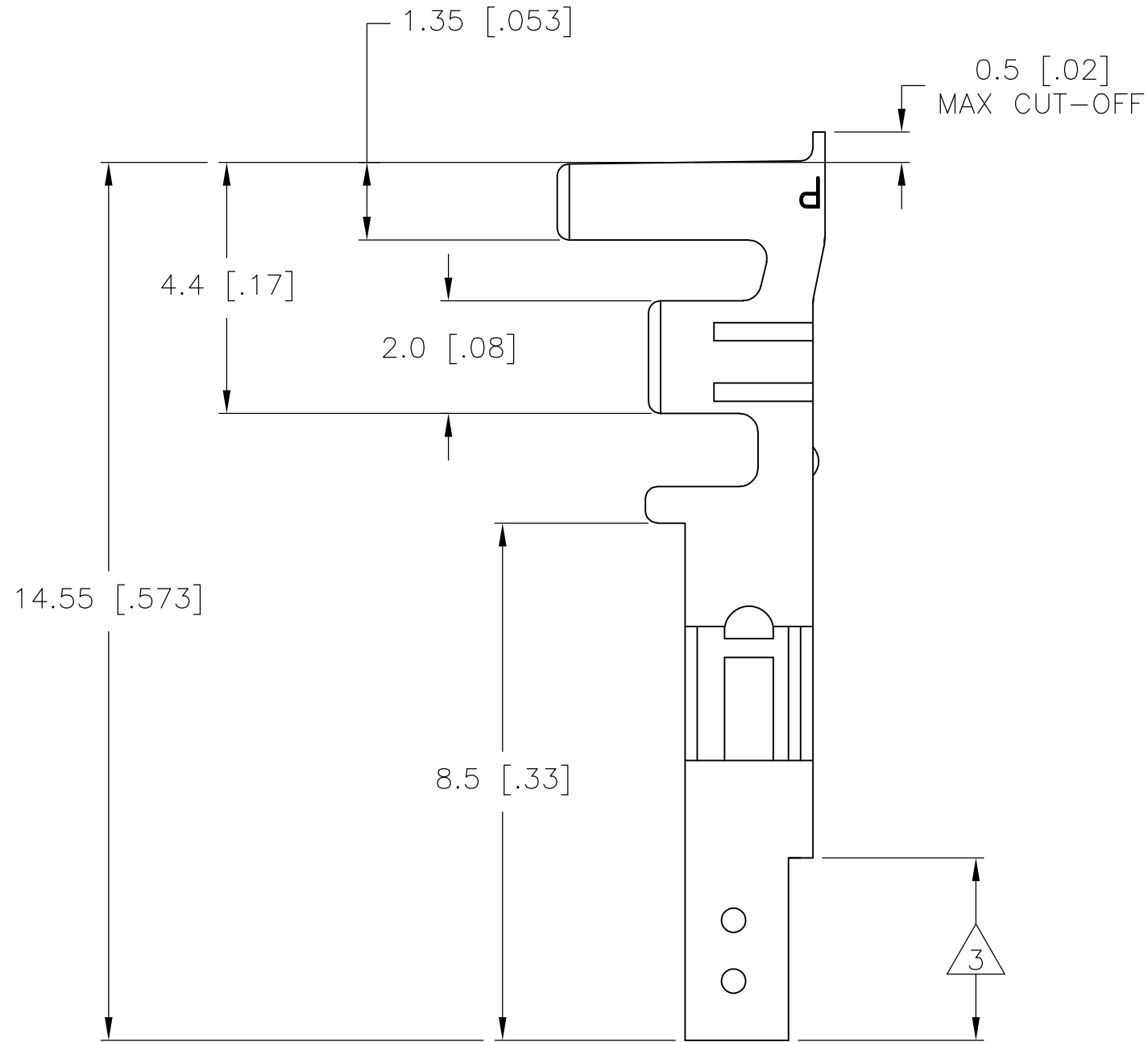
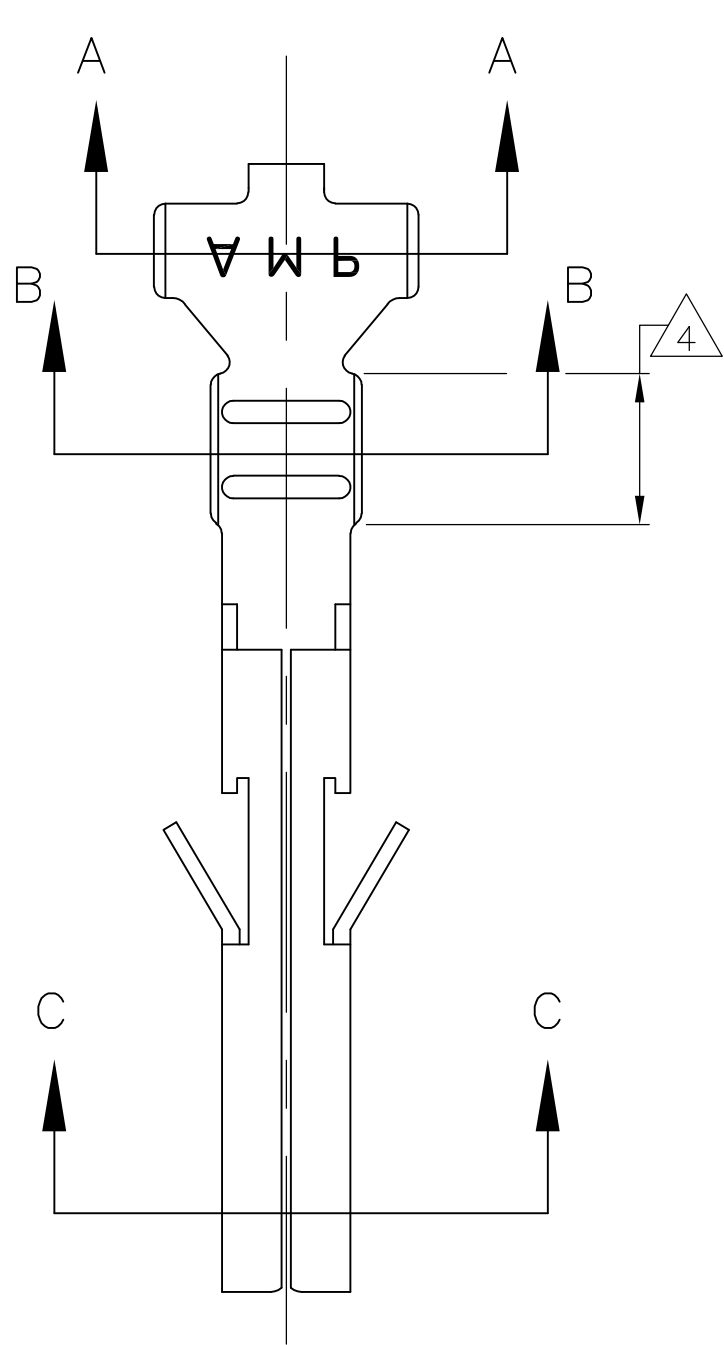
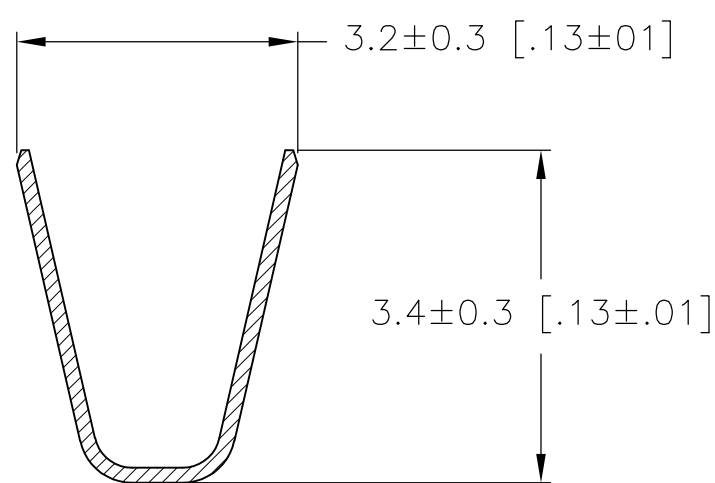


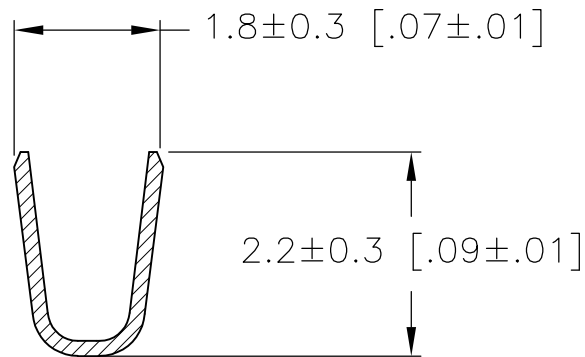
LOC	DIST	REVISIONS					
		P	LTR	DESCRIPTION	DATE	DWN	APVD
CM	00		A1	REVISED PER ECO-11-005027	11MAR11	RK	HMR



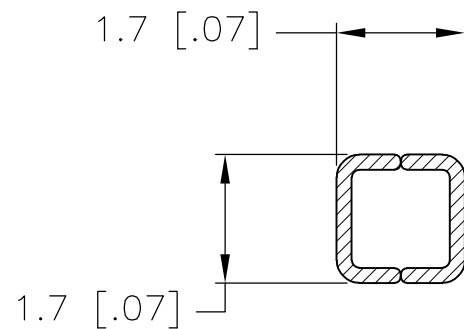
- 1 WIRE RANGE: 0.13-0.32mm² (22-26 AWG).
- 2 INSULATION RANGE: 1.20-1.75 DIA.
- 3 FINISH: 0.76µm MIN GOLD OVER 1.27µm MIN NICKEL REQUIRED ON INNER SURFACE, PERMITTED ON OUTER SURFACE.
- 4 FINISH: 2.54µm MIN TIN ON ALL SURFACES IN THIS AREA.



SECTION A-A



SECTION B-B



SECTION C-C

GOLD	3 4	PHOS. BRZ.	1586317-4
PRE-TIN		PHOS. BRZ.	1586317-3
GOLD	3 4	BRASS	1586317-2
PRE-TIN		BRASS	1586317-1
FINISH:		MATERIAL:	PART NO.

THIS DRAWING IS A CONTROLLED DOCUMENT.		DWN	S. HOOVER	14-OCT-2003	TE Connectivity		
		CHK	D. COLEY	14-OCT-2003			
DIMENSIONS: mm [INCHES]		TOLERANCES UNLESS OTHERWISE SPECIFIED:		APVD	D. COLEY	14-OCT-2003	NAME
		0 PLC ±		PRODUCT SPEC			TERMINAL LOOSE PIECE, SOCKET VAL-U-LOK(TM)
		1 PLC ± 0.3 [.01]		APPLICATION SPEC			
MATERIAL		2 PLC ± 0.15 [.004]				SIZE	CAGE CODE
		3 PLC ± 0.050 [.0020]				A2	00779
		4 PLC ±				DRAWING NO	RESTRICTED TO
		FINISH				C=1586317	—
				WEIGHT			
				CUSTOMER DRAWING		SCALE	10:1
						SHEET	1 OF 1
						REV	A1

Mouser Electronics

Authorized Distributor

Click to View Pricing, Inventory, Delivery & Lifecycle Information:

[TE Connectivity:](#)

[1586317-2](#)