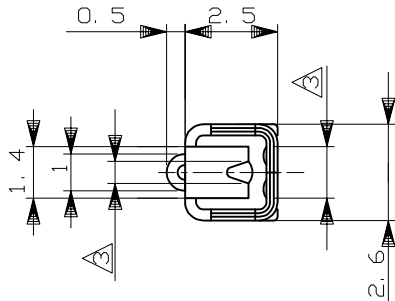
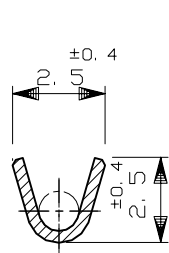
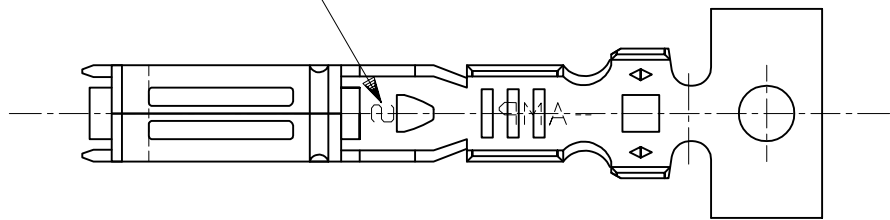


LOC J	DIST —	REVISIONS					
		P	LTR	DESCRIPTION	DATE	DWN	APVD
			G	REVISED ECR-14-018500	18DEC2014	TS	YF

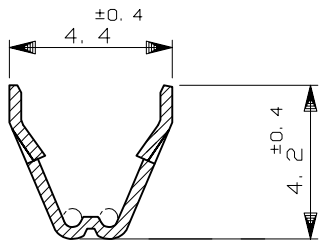


WIRE RANGE ID MARK  
( "S" SIZE MARK )  
( STAMPED ON BOTTOM )

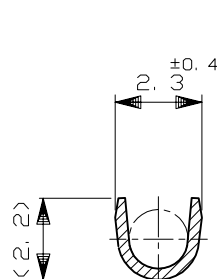
端子識別マーク "S"  
( 底面に刻印 )



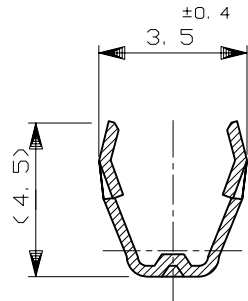
断面 A-A  
SECT A-A



断面 B-B  
SECT B-B



断面 A-A  
SECT A-A  
( 175026のみ適用 )  
( ONLY 175026 )



断面 B-B  
SECT B-B  
( 175026のみ適用 )  
( ONLY 175026 )

- 1. 製品規格 ; 108-5216, 108-5231, 108-5264
- 2. 取付適用規格 ; 114-5091
- 3. 部分金めっき ( 接触面のみ )
- 4. 識別用金めっき ( 全周 )
- 5. 部分金めっき ( 両側のみ )

- 1. SPEC; 108-5216, 108-5231, 108-5264
- 2. APPLICATION SPEC; 114-5091
- 3. SELECTIVE GOLD PLATING ( ONLY CONTACT SIDE )
- 4. GOLD PLATING FOR DISCERNMENT ( ALL AROUND )
- 5. SELECTIVE GOLD PLATING ( ONLY BOTH SIDES OF THE BOX )

	部分金めっき SELECTIVE GOLD	黄銅 板厚0.3 BRASS +0.3	1-173630-2
175026-7	部分金めっき SELECTIVE GOLD	リン青銅 板厚0.3 PHOS BRO. +0.3	173630-7
175026-6	錫めっき済み PRE-TINNED	銅合金 板厚0.3 COPPER ALLOY +0.3	173630-6
	部分金めっき SELECTIVE GOLD	黄銅 板厚0.3 BRASS +0.3	173630-2
175026-1	錫めっき済み PRE-TINNED	黄銅 板厚0.3 BRASS +0.3	173630-1
バラ端子型番 L/P NUMBER	仕上 FINISH	材料 MATERIAL	型番 PART NUMBER

THIS DRAWING IS A CONTROLLED DOCUMENT.	
DIMENSIONS: mm	TOLERANCES UNLESS OTHERWISE SPECIFIED:
	0 PLC ± - 1 PLC ± - 2 PLC ± - 3 PLC ± - 4 PLC ± - ANGLES ± -
MATERIAL SEE TABLE	FINISH SEE TABLE

DWN T.SAGAWA 9/28'87	TE Connectivity		
CHK M.MATSUSAKA 10/6'87			
APVD M.NOGUCHI 10/7'87	NAME		
PRODUCT SPEC	070 SERIES RECEPTACLE CONTACT		
APPLICATION SPEC	SIZE	CAGE CODE	DRAWING NO
WEIGHT	A3	00779	C-173630
CUSTOMER DRAWING		SCALE	5:1
		SHEET	1 OF 1
		REV	G

# Mouser Electronics

Authorized Distributor

Click to View Pricing, Inventory, Delivery & Lifecycle Information:

[TE Connectivity:](#)

[173630-6 \(Mouser Reel\)](#) [173630-6 \(Cut Strip\)](#) [173630-1 \(Loose Piece\)](#)