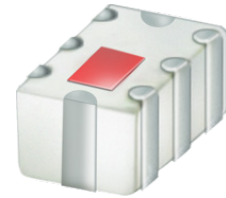


50Ω

DC to 2850 MHz



CASE STYLE: GE0805C-2

The Big Deal

- Very good rejection, 45 dB typical
- Rugged, ceramic construction
- Tiny size, 0.079 x 0.049 x 0.037" (0805)
- Excellent power handling, 6.5W

Product Overview

Mini-Circuits' LFCG-2850+ is an LTCC low pass filter with a passband from DC to 2850 MHz, supporting a variety of applications. This model provides 0.9 dB typical passband insertion loss and provides a very good stopband rejection due to strategically constructed layout with minimal interaction between components. It handles up to 6.5W RF input power and provides a wide operating temperature range from -40°C to 85°C. Housed in a tiny 0805 ceramic form factor with wraparound terminations, the filter is ideal for dense PCB layouts and with minimal performance variation due to parasitics.

Key Features

Feature	Advantages
Very good stopband rejection, 45 dB typical	The LTCC lowpass filter provides a very good stopband rejection until 14 GHz suitable for high end applications.
LTCC Construction	Provides repeatable performance in a rugged, ceramic package well suited for tough environments such as high humidity and temperature extremes.
Tiny size (0.079 x 0.049 x 0.037")	Saves space in dense circuit board layouts and minimizes the effects of parasitics.
High power handling, 6.5W	Supports a wide range of system power requirements.
Wrap-around terminations	Provides excellent solderability and easy visual inspection

Notes

- A. Performance and quality attributes and conditions not expressly stated in this specification document are intended to be excluded and do not form a part of this specification document.
B. Electrical specifications and performance data contained in this specification document are based on Mini-Circuit's applicable established test performance criteria and measurement instructions.
C. The parts covered by this specification document are subject to Mini-Circuits standard limited warranty and terms and conditions (collectively, "Standard Terms"); Purchasers of this part are entitled to the rights and benefits contained therein. For a full statement of the Standard Terms and the exclusive rights and remedies thereunder, please visit Mini-Circuits' website at www.minicircuits.com/MCLStore/terms.jsp



Ceramic Low Pass Filter

50Ω DC to 2850 MHz

LFCG-2850+



CASE STYLE: GE0805C-2

+RoHS Compliant

The +Suffix identifies RoHS Compliance. See our web site for RoHS Compliance methodologies and qualifications

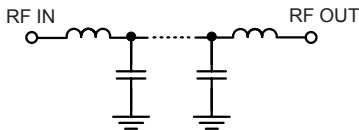
Features

- Low loss, 0.9 dB typical
- High rejection 45 dB typical
- Excellent power handling 6.5W
- Extremely small size 0805 (2.0 x 1.25 mm)
- Temperature stable
- LTCC construction

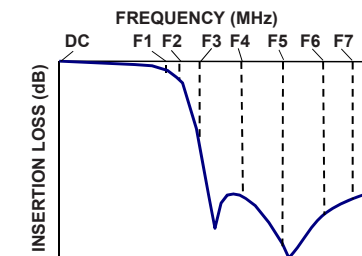
Applications

- Harmonic Rejection
- VHF/UHF transmitters / receivers
- Lab use

Functional Schematic



Typical Frequency Response



Electrical Specifications^{1,2} at 25°C

Parameter		F#	Frequency (MHz)	Min.	Typ.	Max.	Unit
Pass Band	Insertion Loss	DC-F1	DC-2850	—	0.9	1.8	dB
	Freq. Cut-Off	F2	3250	—	3.0	—	dB
	VSWR	DC-F1	DC-2850	—	1.2	—	:1
Stop Band	Rejection Loss	F3-F4	3800-4400	20	30	—	dB
		F4-F5	4400-8000	35	45	—	dB
		F5-F6	8000-12000	—	30	—	dB
		F6-F7	12000-14000	—	20	—	dB
	VSWR	F3-F7	3800-14000	—	20	—	:1

1 In Application where DC voltage is present at either input or output port, coupling capacitors are required.

2 Measured on Mini-Circuits Characterization Test Board TB-799+

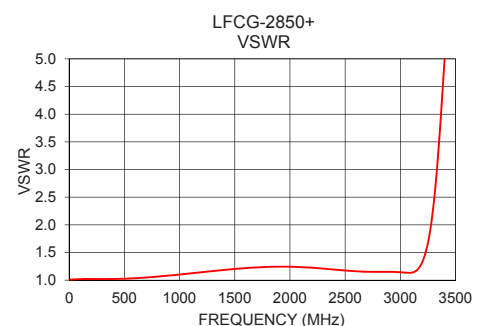
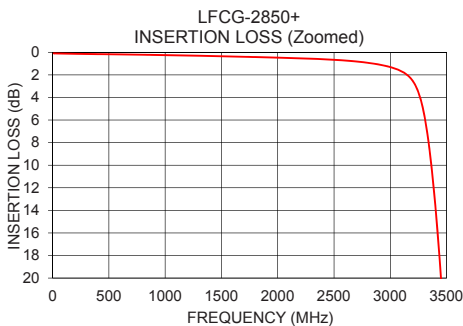
Maximum Ratings

Operating Temperature	-40°C to 85°C
Storage Temperature	-55°C to 100°C
RF Power Input*	6.5 W max. @25°C

*Passband rating, derate linearly to 3.25W at 85°C ambient
Permanent damage may occur if any of these limits are exceeded.

Typical Performance Data at 25°C

Frequency (MHz)	Insertion Loss (dB)	VSWR (:1)
10	0.09	1.02
100	0.12	1.02
1000	0.25	1.10
2000	0.47	1.24
2500	0.66	1.17
2850	1.00	1.15
3000	1.31	1.14
3250	3.55	1.67
3400	13.58	4.97
3455	20.70	6.65
3515	30.62	8.29
3800	34.13	15.06
4400	39.96	28.07
5000	44.93	40.48
8000	45.21	104.83
10000	38.01	52.99
11000	35.16	43.05
12000	32.02	42.29
13500	30.28	43.23
14000	29.56	41.30



Notes

- A. Performance and quality attributes and conditions not expressly stated in this specification document are intended to be excluded and do not form a part of this specification document.
B. Electrical specifications and performance data contained in this specification document are based on Mini-Circuit's applicable established test performance criteria and measurement instructions.
C. The parts covered by this specification document are subject to Mini-Circuits standard limited warranty and terms and conditions (collectively, "Standard Terms"); Purchasers of this part are entitled to the rights and benefits contained therein. For a full statement of the Standard Terms and the exclusive rights and remedies thereunder, please visit Mini-Circuits' website at www.minicircuits.com/MCLStore/terms.jsp



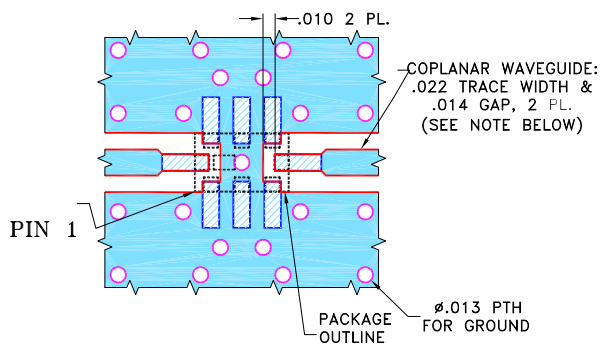
www.minicircuits.com P.O. Box 350166, Brooklyn, NY 11235-0003 (718) 934-4500 sales@minicircuits.com

REV.A
M170328
LFCG-2850+
EDU2883
URJ
181003
Page 2 of 3

Pad Connections

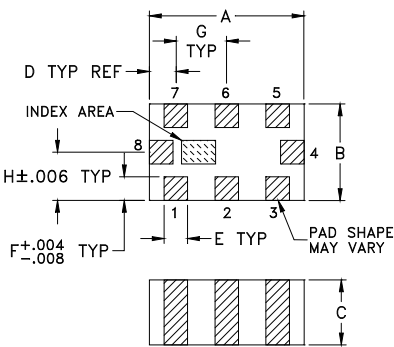
INPUT	8
OUTPUT	4
GROUND	1,2,3,5,6,7

Demo Board MCL P/N: TB-799+
Suggested PCB Layout (PL-429)

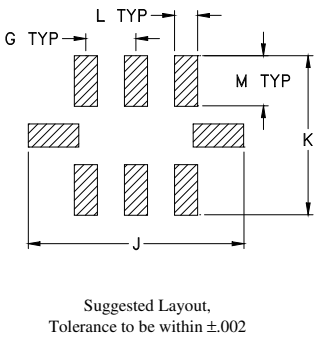


- NOTES:
- 1. COPLANAR WAVEGUIDE IS SHOWN FOR ROGERS RO4350B WITH DIELECTRIC THICKNESS .010" ± .001". COPPER: 1/2 OZ. EACH SIDE. FOR OTHER MATERIALS TRACE WIDTH AND GAP MAY NEED TO BE MODIFIED.
 - 2. BOTTOM SIDE OF THE PCB IS CONTINUOUS GROUND PLANE.
- Legend:
- DENOTES PCB COPPER LAYOUT WITH SMOBC (SOLDER MASK OVER BARE COPPER).
 - DENOTES COPPER LAND PATTERN FREE OF SOLDER MASK.

Outline Drawing



PCB Land Pattern



Outline Dimensions (inch mm)

A	B	C	D	E	F	G
.079	.049	.037	.014	.012	.012	.026
2.00	1.25	0.95	0.35	0.30	0.30	0.65
H	J	K	L	M	Wt.	
.025	.134	.110	.014	.039	grams	
0.63	3.40	2.80	0.35	1.00	.008	

Notes

A. Performance and quality attributes and conditions not expressly stated in this specification document are intended to be excluded and do not form a part of this specification document.

B. Electrical specifications and performance data contained in this specification document are based on Mini-Circuit's applicable established test performance criteria and measurement instructions.

C. The parts covered by this specification document are subject to Mini-Circuits standard limited warranty and terms and conditions (collectively, "Standard Terms"); Purchasers of this part are entitled to the rights and benefits contained therein. For a full statement of the Standard Terms and the exclusive rights and remedies thereunder, please visit Mini-Circuits' website at www.minicircuits.com/MCLStore/terms.jsp

Mouser Electronics

Authorized Distributor

Click to View Pricing, Inventory, Delivery & Lifecycle Information:

[Mini-Circuits:](#)

[LFCG-2850+](#)