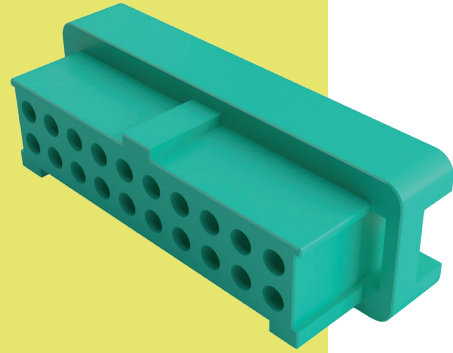


# Gecko with Latches Connectors

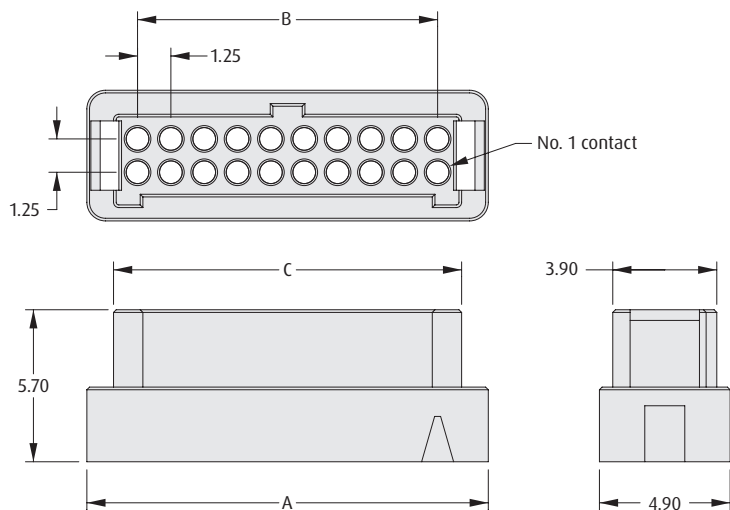
## Female Crimp Housings

- ❖ Features potting wall for extra security.
- ❖ No. 1 position identified on housing.
- ❖ Withstands extremes of temperature: -65°C to +150°C.
- ❖ 3 polarizing points on each housing prevent mis-mating.



GECKO WITH LATCHES

### FEMALE



### CALCULATION

<b>A</b>	$B + 3.8$
<b>B</b>	$0.625 \times (\text{Total No. of contacts} - 2)$
<b>C</b>	$B + 1.8$

### TOOLS

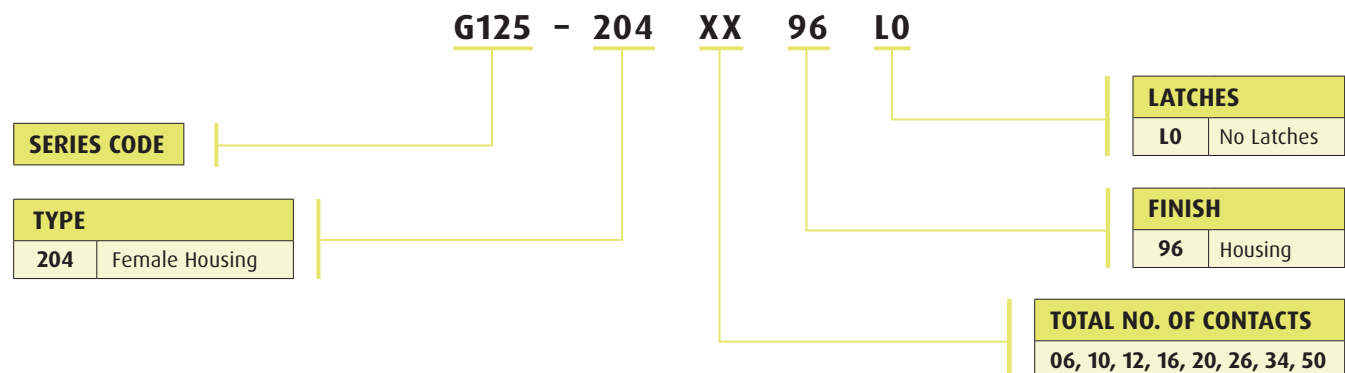
**Recommended Crimp Tool** - Z125-900

**Positioner** - Z125-901

**Contact Insertion/Removal Tool** - Z125-902

- ❖ Female contacts shown on following pages.
- ❖ Instruction sheets available at [www.harwin.com/instructions](http://www.harwin.com/instructions).

### HOW TO ORDER



All dimensions in mm.

Patent Published

# Mouser Electronics

Authorized Distributor

Click to View Pricing, Inventory, Delivery & Lifecycle Information:

Harwin:

[G125-2042096L0](#) [G125-2041296L0](#) [G125-2042696L0](#) [G125-2041696L0](#) [G125-2043496L0](#) [G125-2045096L0](#)